

# EMS Safety Summit 2012 Safety Systems, Strategies and Solutions

## Balancing Relative Benefit in Safety Initiatives

Dia Gainor, NASEMSO Executive Director

February 29<sup>th</sup>, 2012

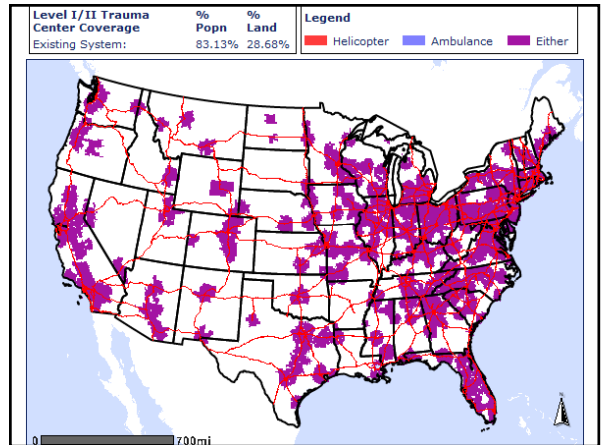
# Balancing Relative Benefit in Safety Initiatives

February 29, 2012

Dia Gainor, NASEMSO Executive Director

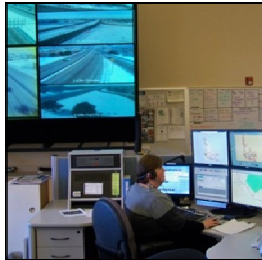


CH BOARD



## Relative benefit: Data Sharing Between PSAPs, the Scene, Emergency Response and Hospitals

- Predictors of Injury Severity
- Mobile Apps
- Route selection & guidance



**EMSN Latest News**

**Ambulance involved in collision on US 119 - West Virginia**  
Feb 16, 2012 - 7:43:10 PM

**6 injured as car hits ambulance in Pensacola - Florida**  
Feb 16, 2012 - 7:42:22 PM

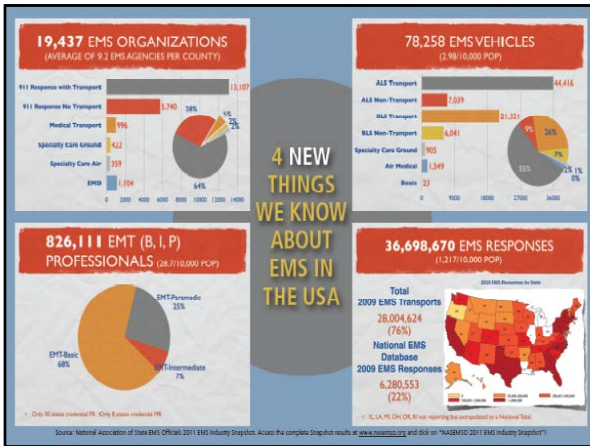
**Two brought to hospital after County Ambulance, Volvo collision - Massachusetts**  
Feb 16, 2012 - 7:40:07 PM

**Ambulance crash leaves 1 dead in Beaufort Co. - South Carolina**  
Feb 16, 2012 - 7:35:42 PM

**Ambulance, vehicle collision shuts down Highway 395 - California**  
Feb 16, 2012 - 7:34:54 PM

**SUV collides with ambulance near Ferndale: 2 medics, driver hospitalized - Washington**  
Feb 16, 2012 - 7:33:36 PM

A Bad Day? Or a Typical Day?



## EVIDENCE BASED QUALITY ASSESSMENT

- Determine clinical "picture" based on EMS, hospital, and trauma center evaluation
- Assess which patients were transported where... and why?
- Evaluate patient care quality
- Identify trends in medical consequences of crashes and prehospital treatment
- Measure patient outcomes
- Performance improvement initiatives for incident management and future evidence based training

**TRB** TRANSPORTATION RESEARCH BOARD  
OF THE NATIONAL ACADEMIES

## Relative benefit: Improved data sharing with EMS:

- Linkage of crash, roadway inventory, and emergency medical records
- Inventories of emergency care elements and EMS incident response readiness
- Retrospective and real time use of device-driven data

**TRB** TRANSPORTATION RESEARCH BOARD  
OF THE NATIONAL ACADEMIES

## CARS Mayday Module

**Probability of Injury: 92%**

**Delta V: 30mph**

**Incident Information:**  
 Incident ID: 1000000000  
 Event Location: 1000000000  
 Event Verified: 1000000000  
 Date Reported: 1000000000  
 Reporter Contact: 1000000000

**Vehicle Information:**  
 Color: White  
 Year: 2008  
 Manufacturer: General Motors  
 Model: Chevrolet 1500  
 Make: Chevrolet  
 Model: Silverado

Example of how a MIECE color-coded road map might appear:

- Green - high level of emergency care resources
- Yellow - medium level of emergency care resources
- Red - low level of emergency care resources

**pennsylvania**  
DEPARTMENT OF HEALTH  
BUREAU OF EMERGENCY MEDICAL SERVICES

## BENEFITS SQUARED

- Improvements to EMS overall as a transportation mode
- Improved outcomes for patients with time-urgent conditions
- Advancements in telemedicine & teletrauma
- Benefits Cubed: Counterbalancing the rural disparity

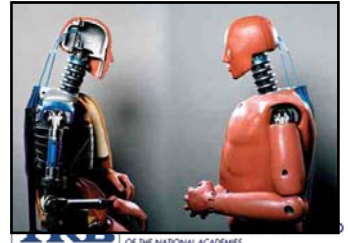
 **TRANSPORTATION RESEARCH BOARD**  
OF THE NATIONAL ACADEMIES

Dia Gainor

[Dia@NASEMSO.org](mailto:Dia@NASEMSO.org)

[www.nasemso.org](http://www.nasemso.org)

208-861-4841



OF THE NATIONAL ACADEMIES