

Goal of the Summit

“Enhancing ambulance transport safety through shared knowledge of technical data”



High Performance Event Driven Deployment

EMS Subcommittee of the TRB Ambulance Transport Safety Summit

October 29th, 2009



Boo Heffner
President
West Emergency Services Group
Rural Metro Corporation



Why

- Limited # of resources
- Decrease in reimbursement and tax base
- Increased demand for service
- Competition in both public and private sectors



How

Analyze Study your call history to predict future events

Prepare Create posting plans to prepare for what's most likely to happen

React Make informed adjustments to deal with real-time events



Benefits

- Decreased Response Times
- On-Time customer pickup
- Improved employee and customer satisfaction
- Decrease chances for collisions etc. due to decreased inappropriate responses or “cross town runs”



Tools

Visually compare your current vehicle locations and their coverage areas to demand

Accurate posting of vehicles dramatically decreases response times

Real-time display allows dispatchers to make posting decisions dynamically

Drivecam – Vehicle Video Event Recorder



Tools

Accurately place vehicles to best cover demand

Decrease response times by placing vehicles where incidents are most likely to occur

Reduce total number of vehicles by maximizing their coverage relative to demand

Automatic generation of EVD plans based on your posting locations, demand history, and vehicle levels

Customize results based on preferences

Add **fixed posts** per contractual requirements

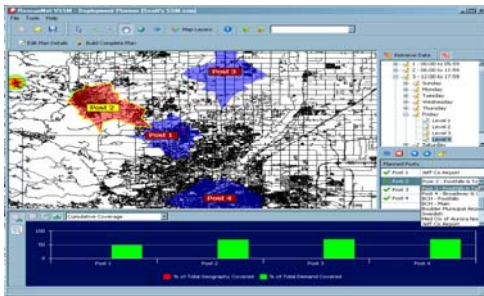
Add **new posts** to handle changing demand

Change your **vehicle coverage levels** by time of day and day of week

First Watch for Early Event Detection & Syndromic Surveillance



Tools



Outcome



•Employee Safety

•UHU –
Contractual
Compliance

•Variable Shifts

•Customer
Satisfaction



Closing remarks



Be prepared



Questions??

- Please raise your hand or type in the message box